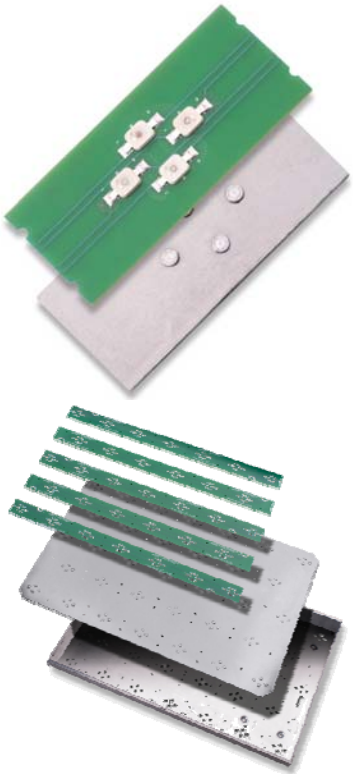


ZSPREADER™

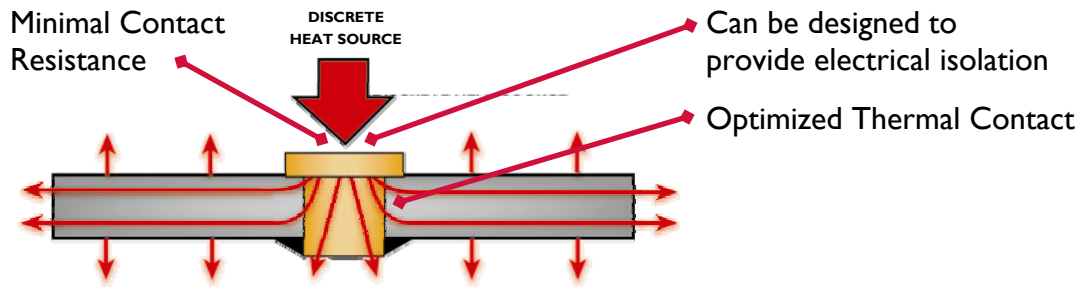
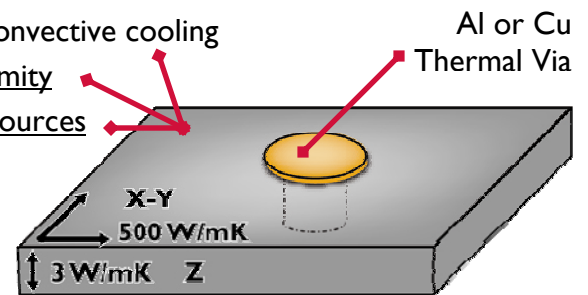
PRODUCTS FOR DISCRETE HEAT SOURCE COOLING



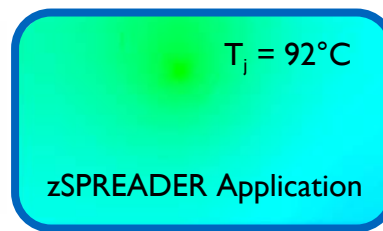
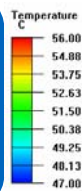
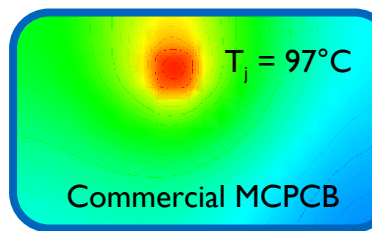
zSPREADER products combine a sheet of high-performance, 500 W/m-K SPREADERSHIELD natural graphite with a copper or aluminum thermal via.

Anisotropic natural graphite enables spreader to:

- Leverage maximum surface area for convective cooling
- Provide improved temperature uniformity
- Provide shielding from external heat sources



HIGH-POWER LED APPLICATION



Reduced LED
junction temp
by ~5°C!
Decreased
weight by 20%!

Email us at egraf@graftech.com to request a sample today!